

NOTE:
 OWNER TO OBTAIN NEIGHBOR'S
 APPROVAL REGARDING WORK DONE
 ON NEIGHBORING PARTY WALL

FOR DISCUSSION PRELIMINARY NOT FOR CONSTRUCTION

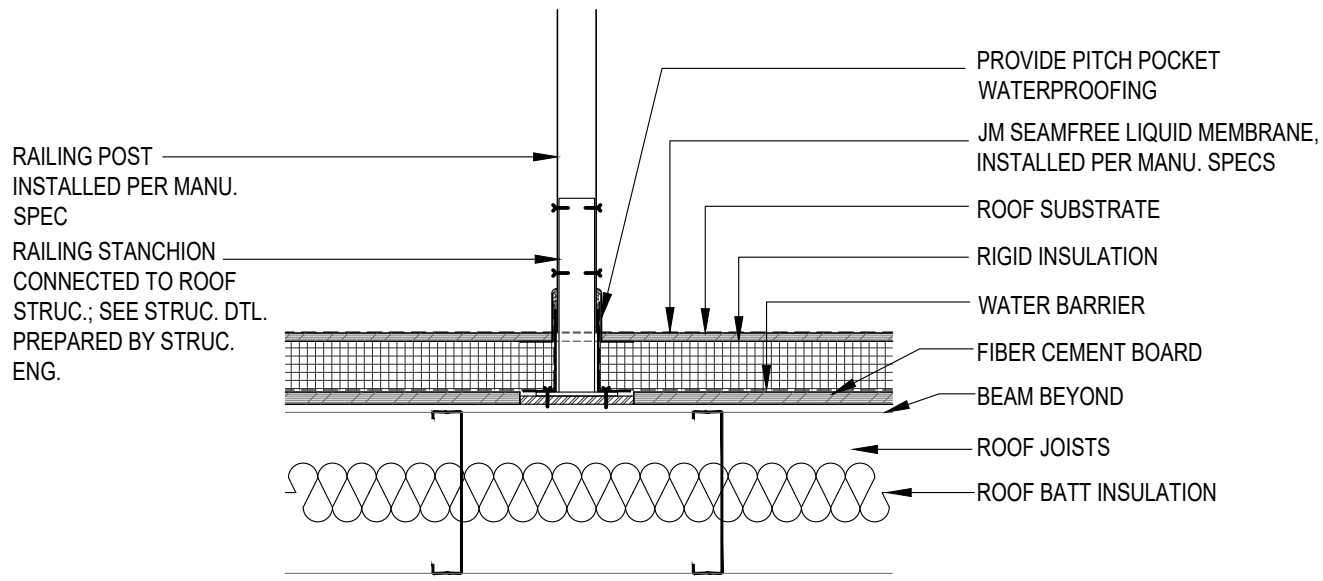
PROJECT:	105 8TH AVENUE, BROOKLYN, NY 11215		
TITLE:	FLASHING DETAIL @ SOUTH PARTY WALL		
DRAWN BY:	E.Y.	CHK BY:	L.C.
SCALE:	1" = 1'-0"		
DATE:	03.07.17		

LC Leonard Colchamiro PC AIA
 Architects and Planners
 227 Fifth Avenue Brooklyn NY 11215
 phone: 718.638.5442 fax: 718.789.3366

© COPYRIGHT:
 ALL IDEAS, DESIGNS, ARRANGEMENTS AND PLANS INDICATED OR REPRESENTED BY THIS DRAWING ARE OWNED BY AND PROPERTY OF LEONARD COLCHAMIRO PC AIA AND WERE CREATED, EVOLVED AND DEVELOPED FOR USE ON AND IN CONNECTION WITH THE SPECIFIC PROJECT. NONE OF SUCH IDEAS, DESIGNS, ARRANGEMENTS OR PLANS SHALL BE USED BY OR DISCLOSED TO ANY PERSON, FIRM OR CORPORATION FOR ANY PURPOSE WHATSOEVER WITHOUT THE WRITTEN PERMISSION OF LEONARD COLCHAMIRO PC AIA.

CLIENT:
105 8TH AVENUE, LLC

SHEET:
SK-24



FOR DISCUSSION PRELIMINARY NOT FOR CONSTRUCTION

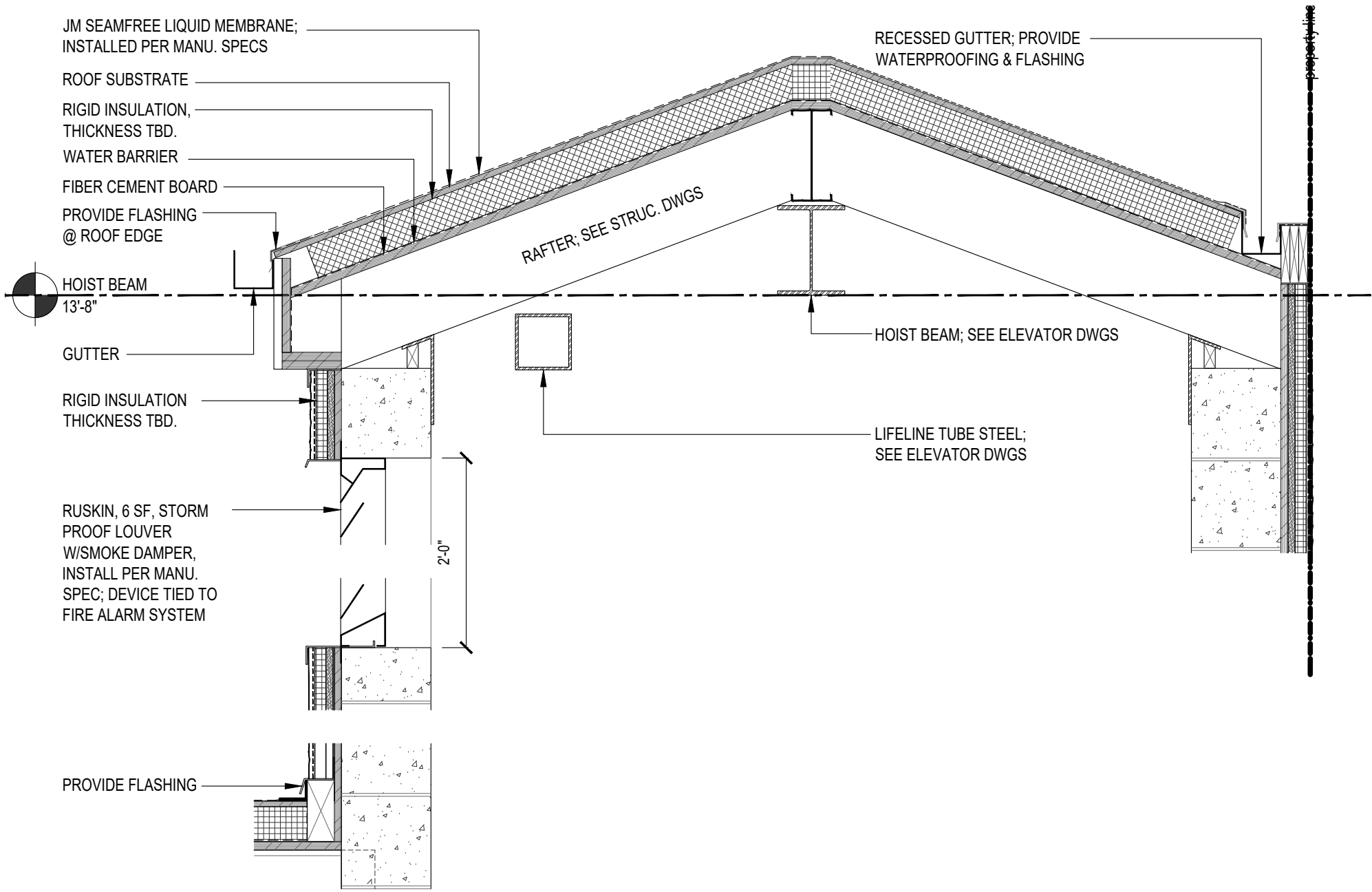
PROJECT:	105 8TH AVENUE, BROOKLYN, NY 11215		
TITLE:	RAILING DETAIL @ ROOF		
DRAWN BY:	E.Y.	CHK BY:	L.C.
SCALE:	1" = 1'-0"		
DATE:	03.28.17		

LC Leonard Colchamiro PC AIA
Architects and Planners
227 Fifth Avenue Brooklyn NY 11215
phone: 718.638.5442 fax: 718.789.3366

© COPYRIGHT:
ALL IDEAS, DESIGNS, ARRANGEMENTS AND PLANS INDICATED OR REPRESENTED BY THIS DRAWING ARE OWNED BY AND PROPERTY OF LEONARD COLCHAMIRO PC AIA AND WERE CREATED, EVOLVED AND DEVELOPED FOR USE ON AND IN CONNECTION WITH THE SPECIFIC PROJECT. NONE OF SUCH IDEAS, DESIGNS, ARRANGEMENTS OR PLANS SHALL BE USED BY OR DISCLOSED TO ANY PERSON, FIRM OR CORPORATION FOR ANY PURPOSE WHATSOEVER WITHOUT THE WRITTEN PERMISSION OF LEONARD COLCHAMIRO PC AIA.

CLIENT:
**105 8TH
AVENUE, LLC**

SHEET:
SK-25



PROPERTY LINE

FOR DISCUSSION PRELIMINARY NOT FOR CONSTRUCTION

PROJECT:	105 8TH AVENUE, BROOKLYN, NY 11215		
TITLE:	ELEVATOR BULKHEAD ROOF DETAIL		
DRAWN BY:	E.Y.	CHK BY:	L.C.
SCALE:	1" = 1'-0"		
DATE:	04.04.17		

Leonard Colchamiro PC AIA
Architects and Planners
227 Fifth Avenue Brooklyn NY 11215
phone: 718.638.5442 fax: 718.789.3366

© COPYRIGHT:
ALL IDEAS, DESIGNS, ARRANGEMENTS AND PLANS INDICATED OR REPRESENTED BY THIS DRAWING ARE OWNED BY AND PROPERTY OF LEONARD COLCHAMIRO PC AIA AND WERE CREATED, EVOLVED AND DEVELOPED FOR USE ON AND IN CONNECTION WITH THE SPECIFIC PROJECT. NONE OF SUCH IDEAS, DESIGNS, ARRANGEMENTS OR PLANS SHALL BE USED BY OR DISCLOSED TO ANY PERSON, FIRM OR CORPORATION FOR ANY PURPOSE WHATSOEVER WITHOUT THE WRITTEN PERMISSION OF LEONARD COLCHAMIRO PC AIA.

CLIENT:
105 8TH AVENUE, LLC

SHEET:
SK-26

HOIST BEAM
13'-8"

RUSKIN, 6 SF, STORM
PROOF LOUVER
W/SMOKE DAMPER,
INSTALL PER MANU.
SPEC; DEVICE TIED TO
FIRE ALARM SYSTEM

2'-0"

VENT CLEARANCE
1'-0"

PROVIDE FLASHING

RAFTER; SEE STRUC. DWGS

RECESSED GUTTER; PROVIDE
WATERPROOFING & FLASHING

HOIST BEAM; SEE ELEVATOR DWGS

LIFELINE TUBE STEEL;
SEE ELEVATOR DWGS

PROPERTY LINE

FOR DISCUSSION PRELIMINARY NOT FOR CONSTRUCTION

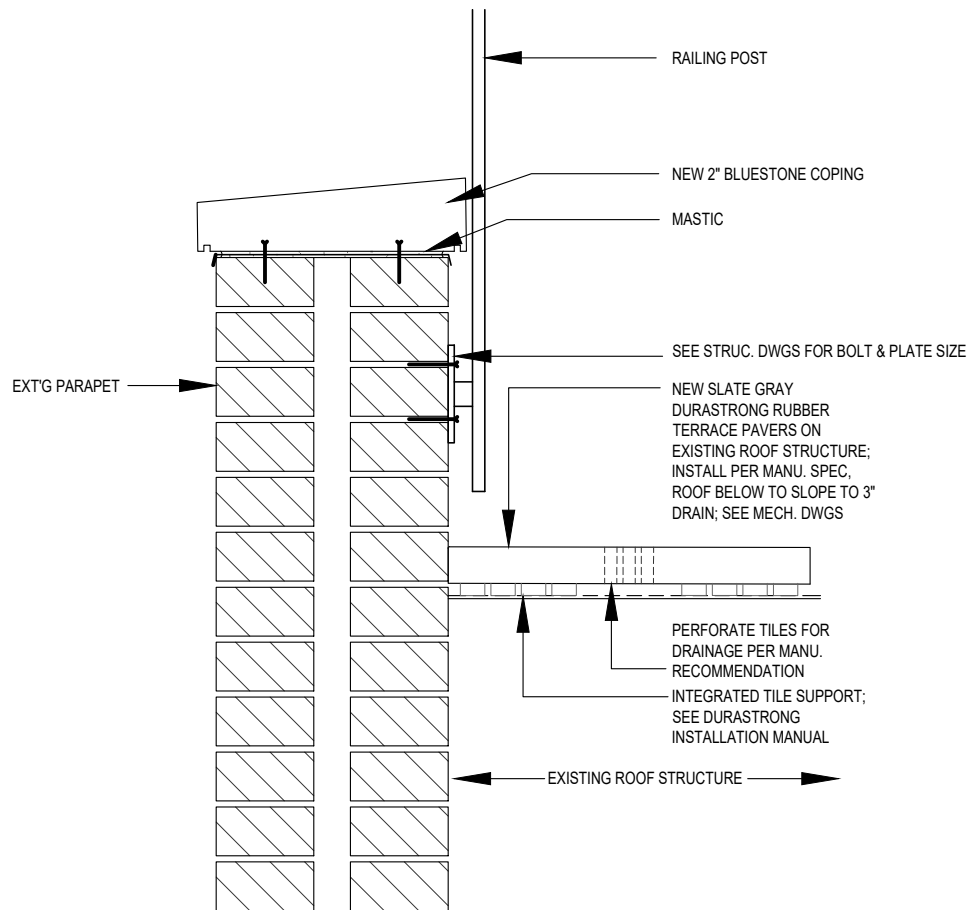
PROJECT:	105 8TH AVENUE, BROOKLYN, NY 11215		
TITLE:	ELEVATOR VENT DETAIL		
DRAWN BY:	E.Y.	CHK BY:	L.C.
SCALE:	1" = 1'-0"		
DATE:	08.28.17		

LC Leonard Colchamiro PC AIA
Architects and Planners
227 Fifth Avenue Brooklyn NY 11215
phone: 718.638.5442 fax: 718.789.3366

© COPYRIGHT:
ALL IDEAS, DESIGNS, ARRANGEMENTS AND PLANS INDICATED OR REPRESENTED BY THIS DRAWING ARE OWNED BY AND PROPERTY OF LEONARD COLCHAMIRO PC AIA AND WERE CREATED, EVOLVED AND DEVELOPED FOR USE ON AND IN CONNECTION WITH THE SPECIFIC PROJECT. NONE OF SUCH IDEAS, DESIGNS, ARRANGEMENTS OR PLANS SHALL BE USED BY OR DISCLOSED TO ANY PERSON, FIRM OR CORPORATION FOR ANY PURPOSE WHATSOEVER WITHOUT THE WRITTEN PERMISSION OF LEONARD COLCHAMIRO PC AIA.

CLIENT:
105 8TH AVENUE, LLC

SHEET:
SK



FOR DISCUSSION PRELIMINARY NOT FOR CONSTRUCTION

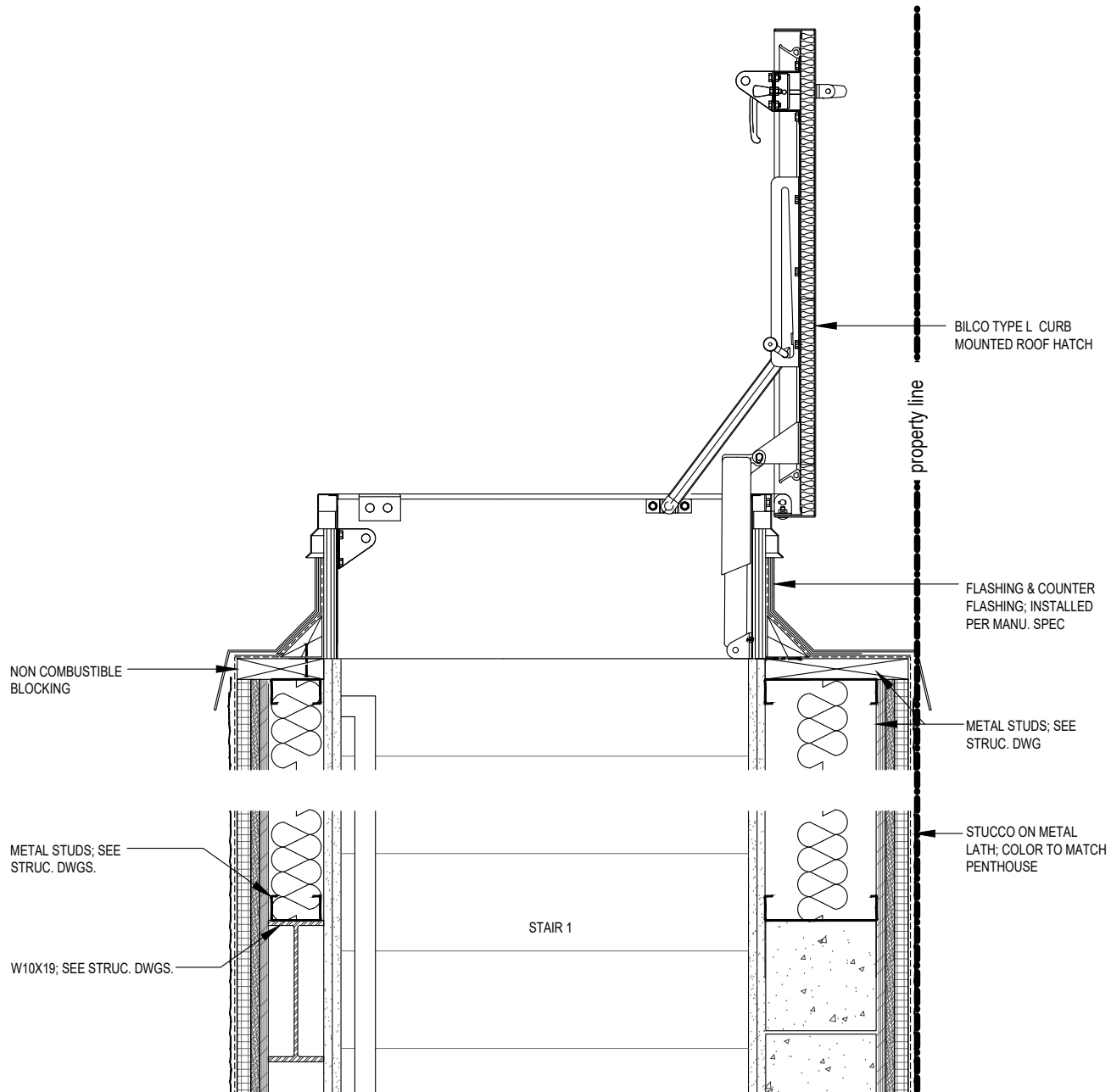
PROJECT:	105 8TH AVENUE, BROOKLYN, NY 11215		
TITLE:	TERRACE RAILING DETAIL		
DRAWN BY:	E.Y.	CHK BY:	L.C.
SCALE:	1" = 1'-0"		
DATE:	04.04.17		

LC Leonard Colchamiro PC AIA
Architects and Planners
227 Fifth Avenue Brooklyn NY 11215
phone: 718.638.5442 fax: 718.789.3366

© COPYRIGHT:
ALL IDEAS, DESIGNS, ARRANGEMENTS AND PLANS INDICATED OR REPRESENTED BY THIS DRAWING ARE OWNED BY AND PROPERTY OF LEONARD COLCHAMIRO PC AIA AND WERE CREATED, EVOLVED AND DEVELOPED FOR USE ON AND IN CONNECTION WITH THE SPECIFIC PROJECT. NONE OF SUCH IDEAS, DESIGNS, ARRANGEMENTS OR PLANS SHALL BE USED BY OR DISCLOSED TO ANY PERSON, FIRM OR CORPORATION FOR ANY PURPOSE WHATSOEVER WITHOUT THE WRITTEN PERMISSION OF LEONARD COLCHAMIRO PC AIA.

CLIENT:
105 8TH AVENUE, LLC

SHEET:
SK-27



FOR DISCUSSION PRELIMINARY NOT FOR CONSTRUCTION

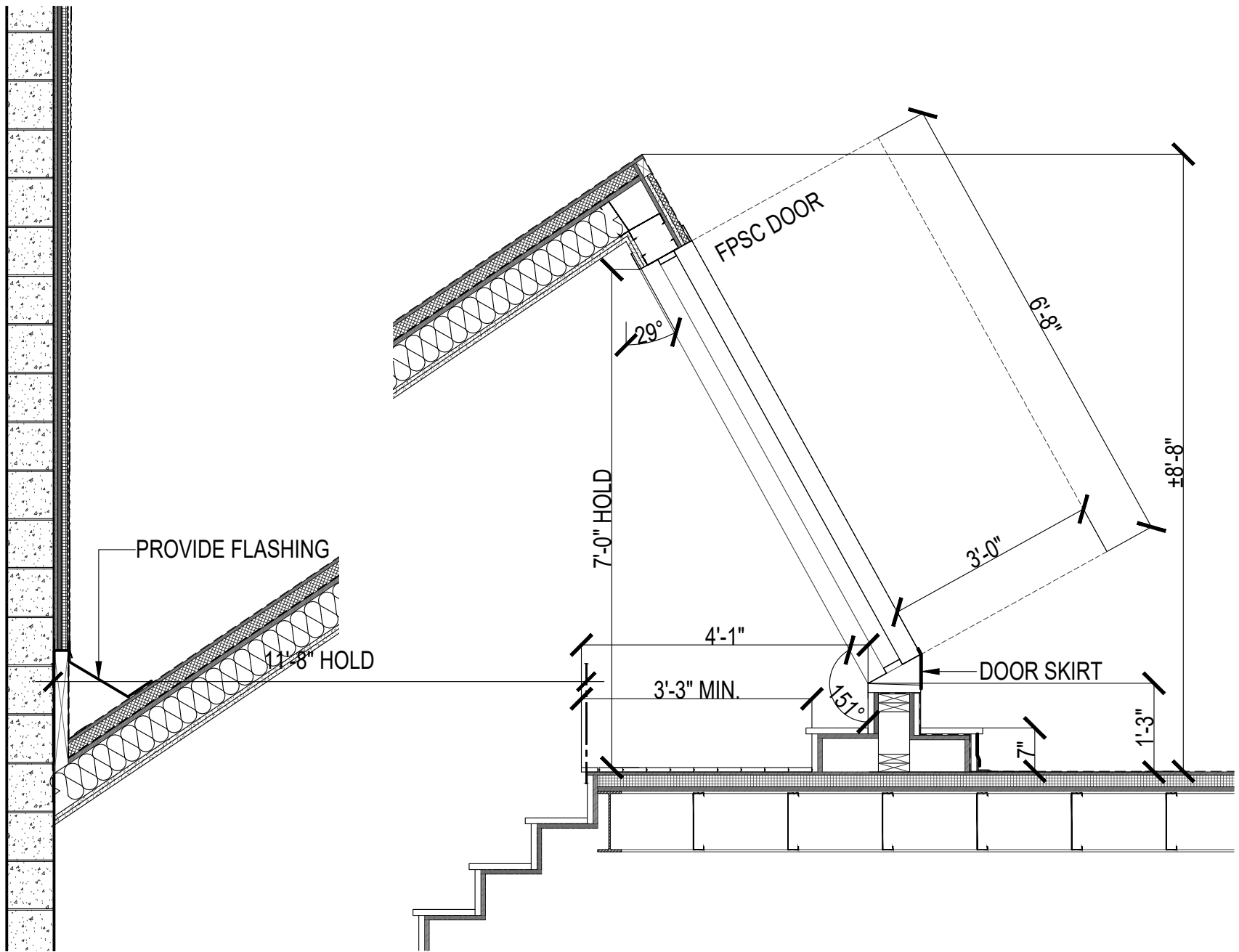
PROJECT:	105 8TH AVENUE, BROOKLYN, NY 11215		
TITLE:	ROOF HATCH DETAIL		
DRAWN BY:	E.Y.	CHK BY:	L.C.
SCALE:	1" = 1'-0"		
DATE:	04.05.17		

LC Leonard Colchamiro PC AIA
Architects and Planners
227 Fifth Avenue Brooklyn NY 11215
phone: 718.638.5442 fax: 718.789.3366

© COPYRIGHT:
ALL IDEAS, DESIGNS, ARRANGEMENTS AND PLANS INDICATED OR REPRESENTED BY THIS DRAWING ARE OWNED BY AND PROPERTY OF LEONARD COLCHAMIRO PC AIA AND WERE CREATED, EVOLVED AND DEVELOPED FOR USE ON AND IN CONNECTION WITH THE SPECIFIC PROJECT. NONE OF SUCH IDEAS, DESIGNS, ARRANGEMENTS OR PLANS SHALL BE USED BY OR DISCLOSED TO ANY PERSON, FIRM OR CORPORATION FOR ANY PURPOSE WHATSOEVER WITHOUT THE WRITTEN PERMISSION OF LEONARD COLCHAMIRO PC AIA.

CLIENT:
105 8TH AVENUE, LLC

SHEET:
SK-28



FOR DISCUSSION

PROJECT:	105 8TH AVENUE, BROOKLYN, NY 11215		
TITLE:	ROOF HATCH DETAIL		
DRAWN BY:	E.Y.	CHK BY:	L.C.
SCALE:	1" = 1'-0"		
DATE:	07.14.17		


Leonard Colchamiro PC AIA
 Architects and Planners
 227 Fifth Avenue Brooklyn NY 11215
 phone: 718.638.5442 fax: 718.789.3366

© COPYRIGHT:
 ALL IDEAS, DESIGNS, ARRANGEMENTS AND PLANS INDICATED OR REPRESENTED BY THIS DRAWING ARE OWNED BY AND PROPERTY OF LEONARD COLCHAMIRO PC AIA AND WERE CREATED, EVOLVED AND DEVELOPED FOR USE ON AND IN CONNECTION WITH THE SPECIFIC PROJECT. NONE OF SUCH IDEAS, DESIGNS, ARRANGEMENTS OR PLANS SHALL BE USED BY OR DISCLOSED TO ANY PERSON, FIRM OR CORPORATION FOR ANY PURPOSE WHATSOEVER WITHOUT THE WRITTEN PERMISSION OF LEONARD COLCHAMIRO PC AIA.

CLIENT:
105 8TH AVENUE, LLC

SHEET:
SK

Client:
105 8TH AVENUE, LLC

Copyright:
 All ideas, designs, arrangements and plans indicated or represented by this drawing are owned by and property of Leonard Colchamiro PC AIA and were created, evolved and developed for use on and in connection with the specific project. None of such ideas, designs, arrangements or plans shall be used by or disclosed to any person, firm or corporation for any purpose whatsoever without the written permission of Leonard Colchamiro PC AIA

Approval:

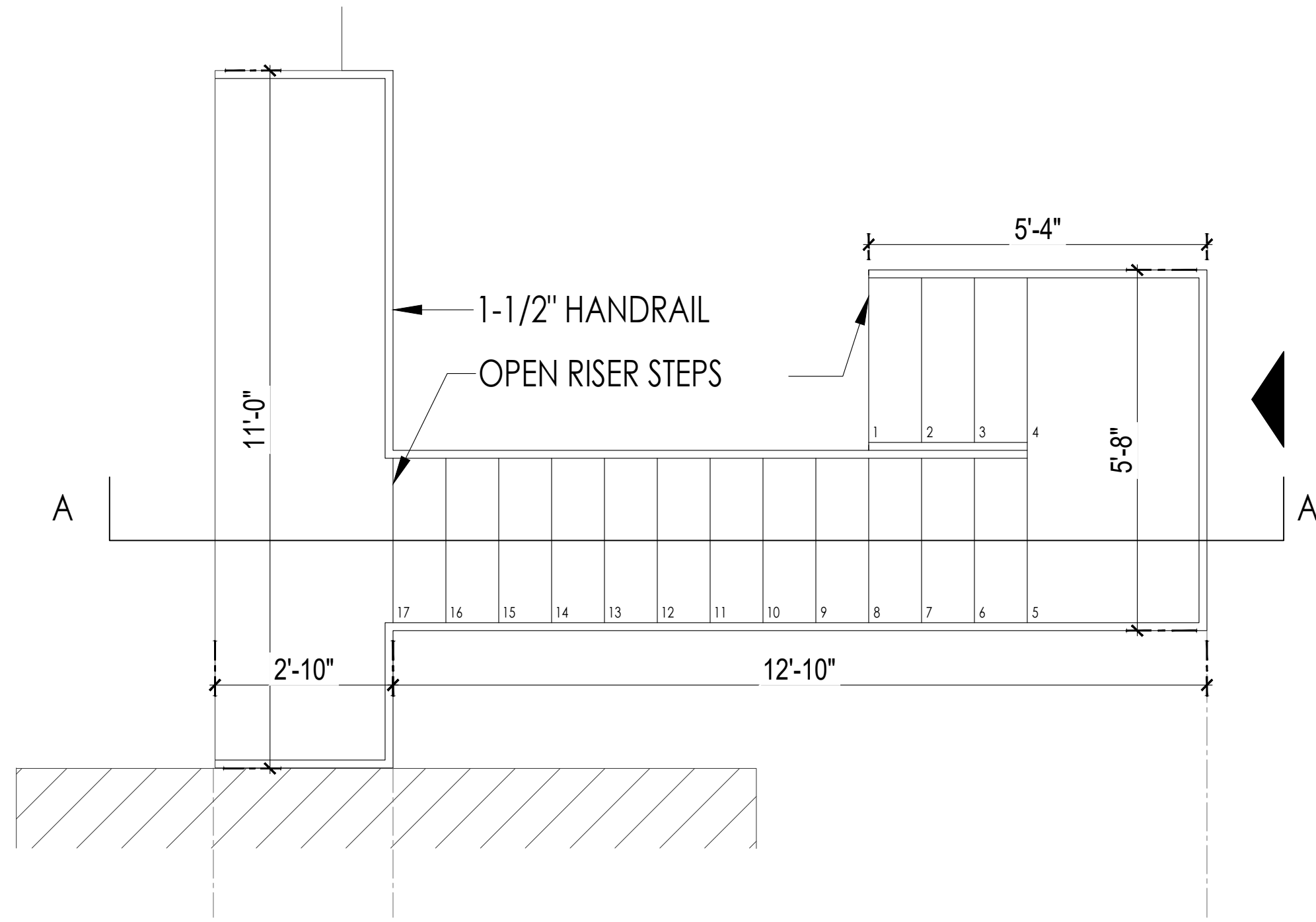
Issue & Revision Dates

04/12/17	

Drawn by: E.Y.
 Checked by: L.C.
 Scale: AS NOTED
 Title: REAR YARD STAIR & BALCONY PLAN, ELEVATION, & DETAIL

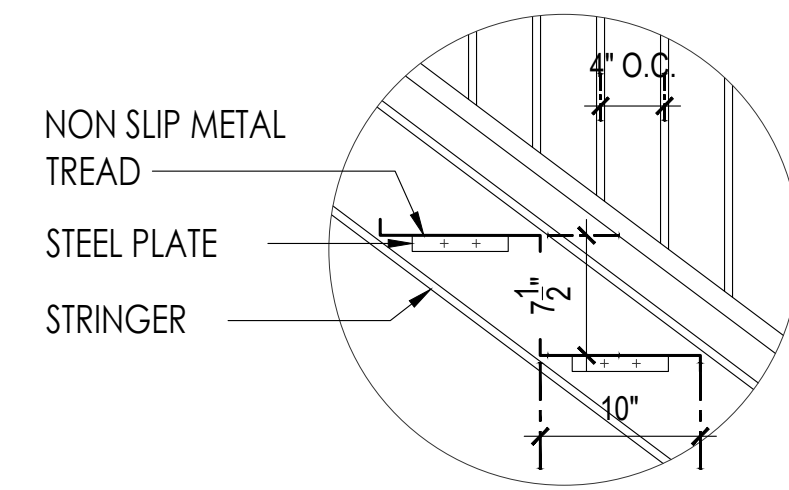
Project:
Residential Conversion
 at
105 8th Avenue
 Brooklyn, New York 11215

Date:
02/13/15
 Sheet:
SK-30
 SHEET OF



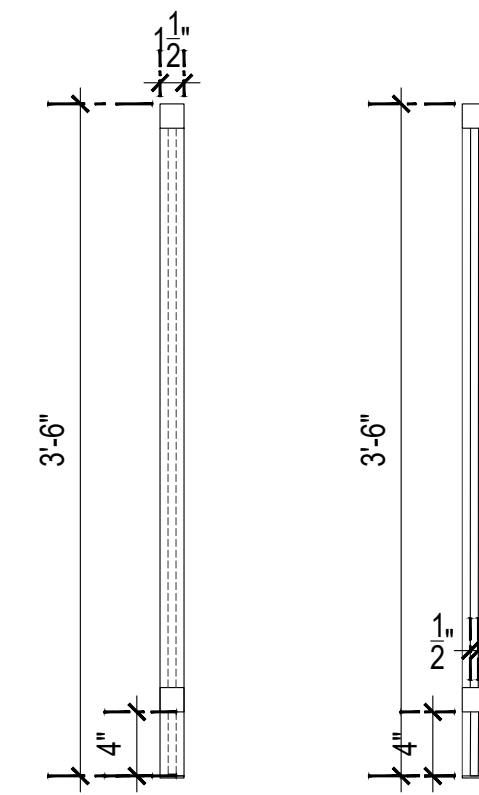
REAR BALCONY STAIR PLAN

SCALE: 1/2" = 1'-0"



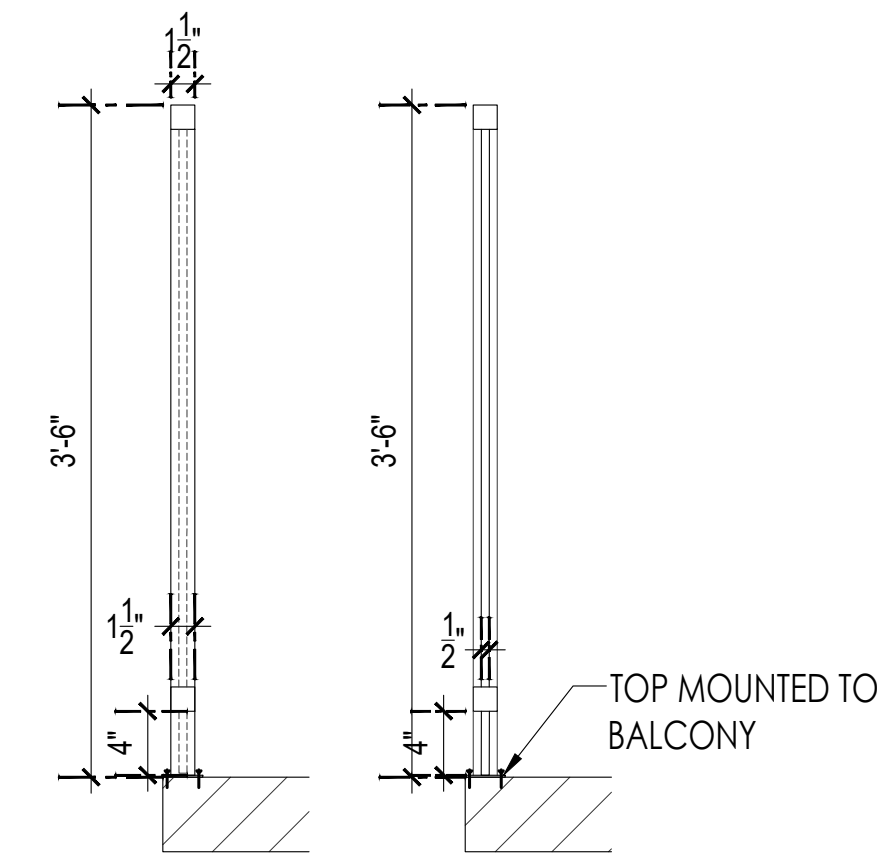
STAIR DETAIL

SCALE: 1" = 1'-0"



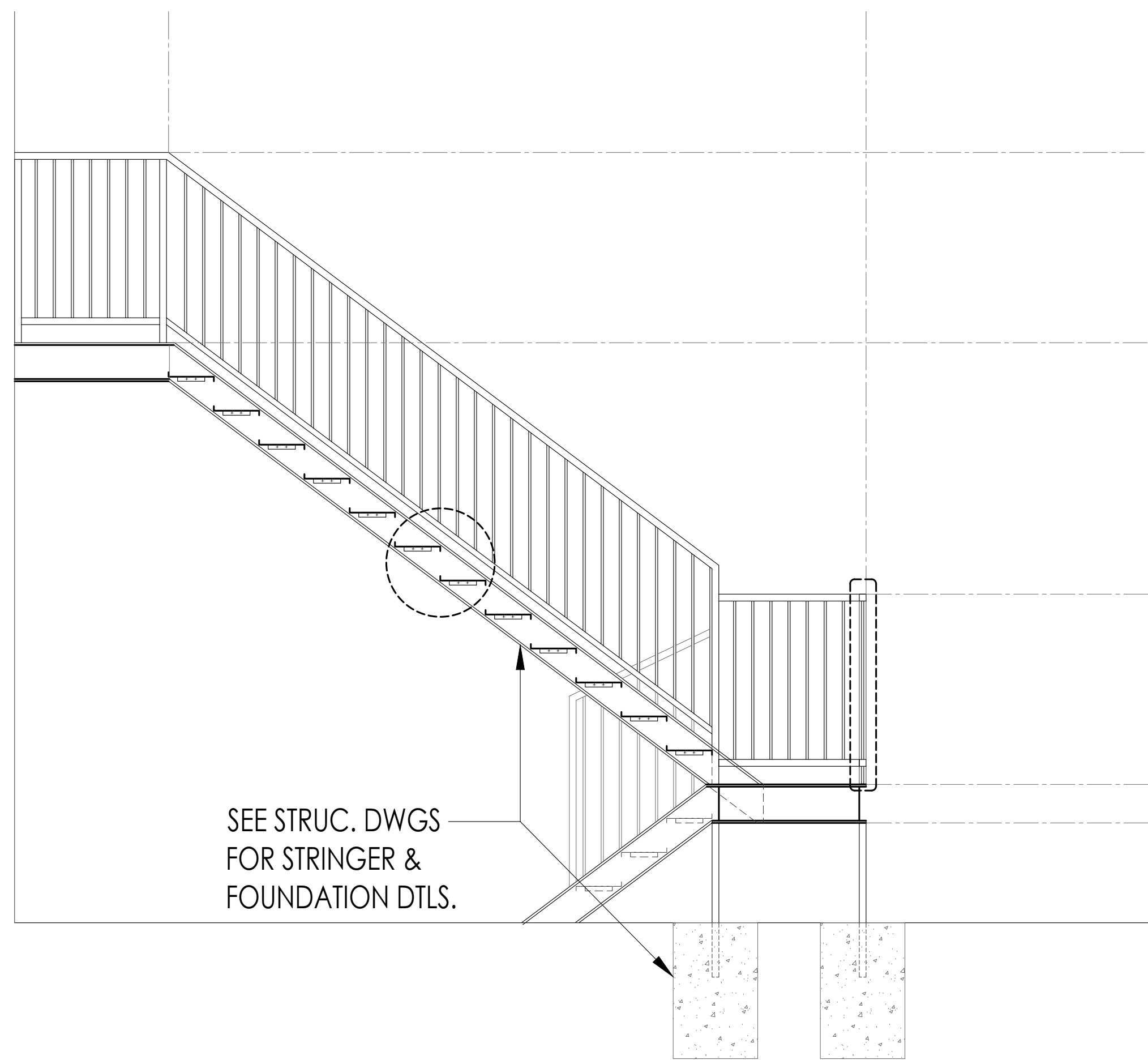
RAIL POST DETAILS

SCALE: 1" = 1'-0"



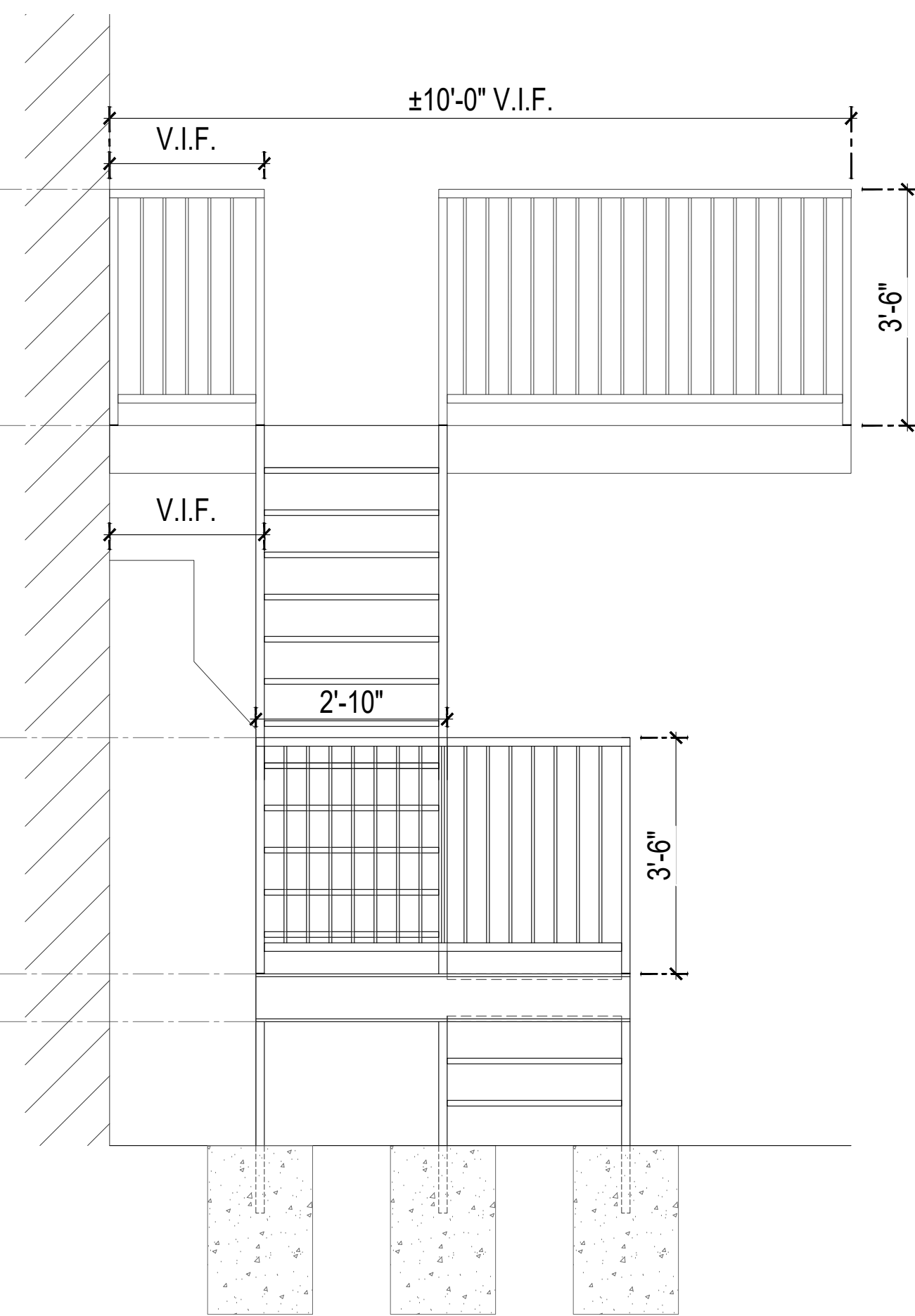
BALCONY RAIL POST DETAILS

SCALE: 1" = 1'-0"



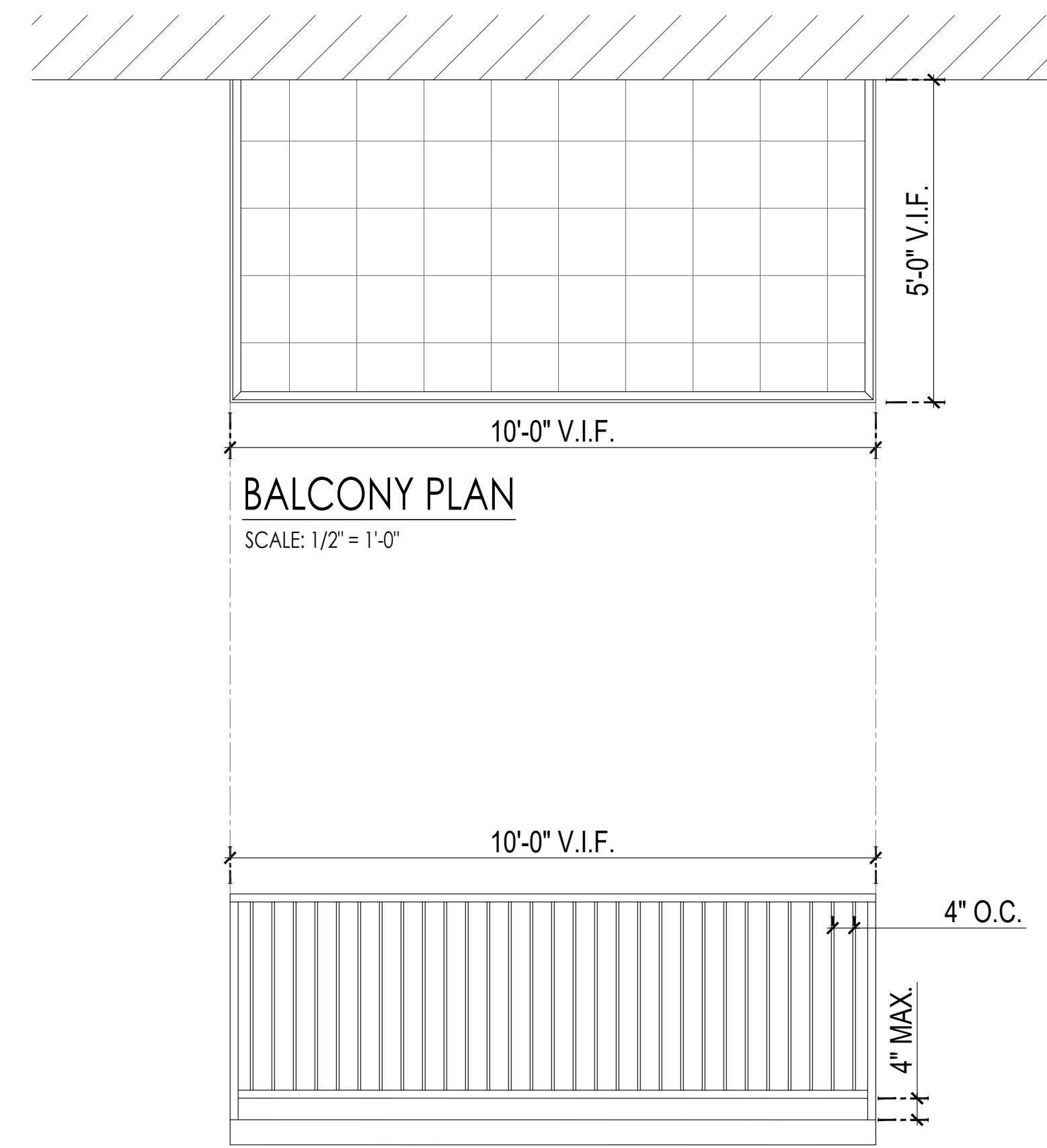
REAR YARD STAIR SECTION A-A

SCALE: 1/2" = 1'-0"



REAR YARD STAIR ELEVATION

SCALE: 1/2" = 1'-0"



BALCONY PLAN

SCALE: 1/2" = 1'-0"

BALCONY ELEVATION

SCALE: 1/2" = 1'-0"

CONTRACTOR TO SUBMIT SHOP DWGS PRIOR TO FABRICATION

FOR DISCUSSION PRELIMINARY NOT FOR CONSTRUCTION

Client:

105 8TH AVENUE, LLC

Copyright:

All ideas, designs, arrangements and plans indicated or represented by this drawing are owned by and property of Leonard Colchamiro PC AIA and were created, evolved and developed for use on and in connection with the specific project. None of such ideas, designs, arrangements or plans shall be used by or disclosed to any person, firm or corporation for any purpose whatsoever without the written permission of Leonard Colchamiro PC AIA

Approval:

Issue & Revision Dates

04/12/17

Drawn by: E.Y.

Checked by: L.C.

Scale: AS NOTED

Title: TERRACE PLAN, ELEVATION, & DETAIL

Project:

Residential Conversion

at

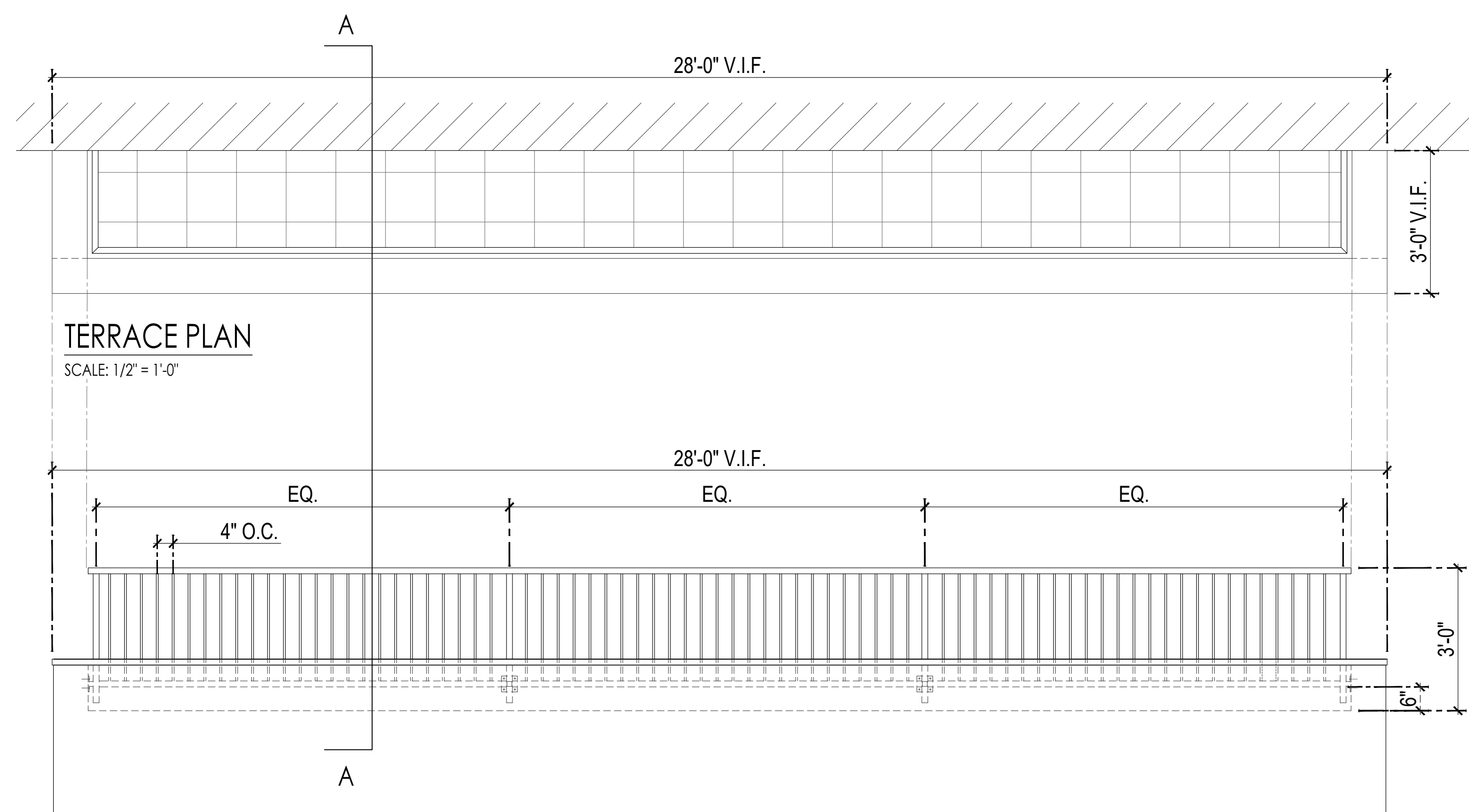
105 8th Avenue

Brooklyn, New York 11215

Date:
02/13/15

Sheet:
SK-31

SHEET OF

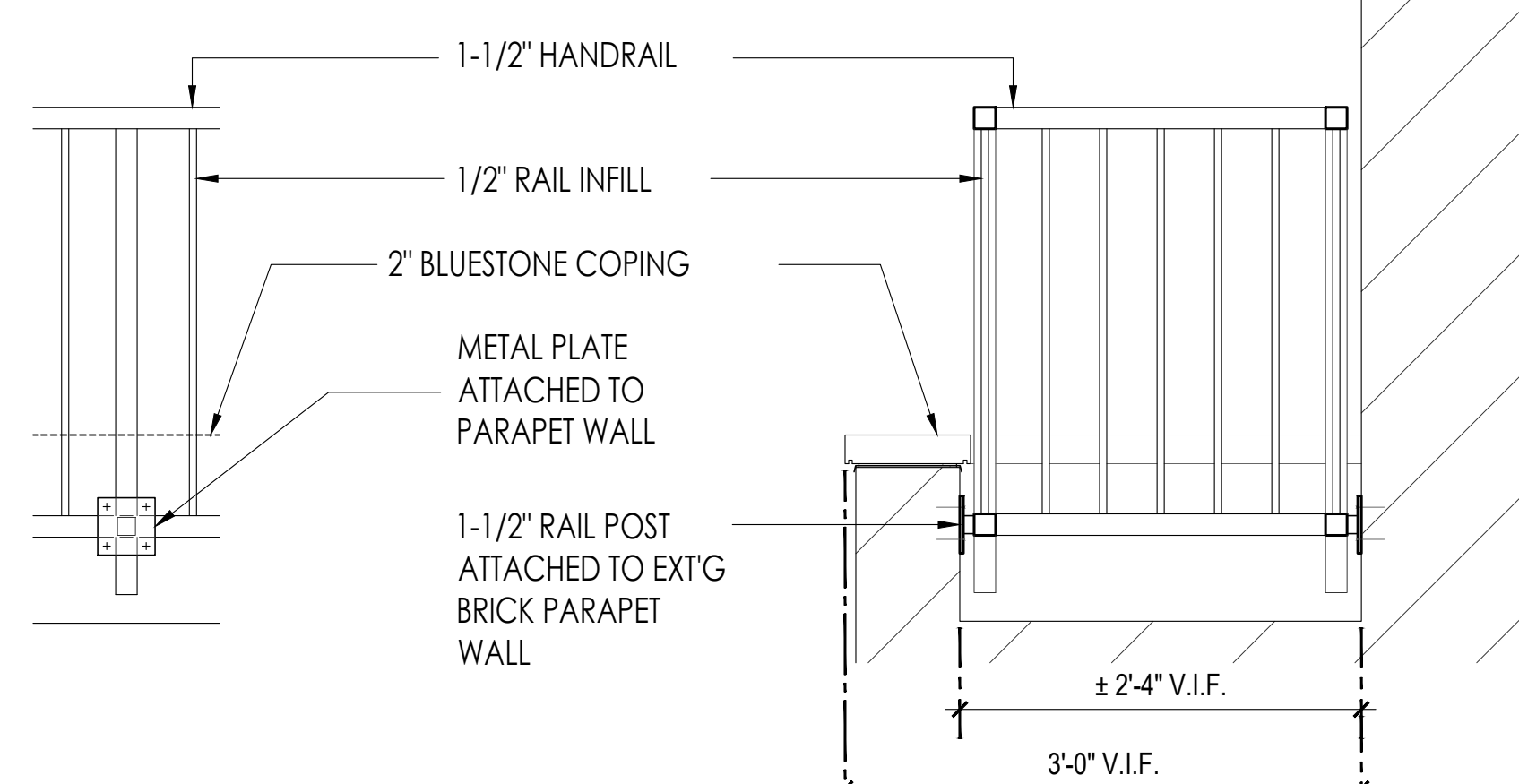


TERRACE PLAN
SCALE: 1/2" = 1'-0"

TERRACE ELEVATION
SCALE: 1/2" = 1'-0"

RAILING ELEVATION
SCALE: 1" = 1'-0"

TERRACE SECTION A-A
SCALE: 1" = 1'-0"



CONTRACTOR TO SUBMIT SHOP DWGS PRIOR TO FABRICATION

FOR DISCUSSION PRELIMINARY NOT FOR CONSTRUCTION