

Client:

ProHEALTH Care Associates, LLP



Copyright:

All ideas, designs, arrangements and plans indicated or represented by this drawing are owned by and property of Leonard Colchamiro PC AIA and were created, evolved and developed for use on and in connection with the specific project. None of such ideas, designs, arrangements or plans shall be used by or disclosed to any person, firm or corporation for any purpose whatsoever without the written permission of Leonard Colchamiro PC AIA

Approval:

Issue & Revision Dates

08/11/16

PRELIMINARY - NOT FOR CONSTRUCTION

Drawn by: K.D., E.Y.

Checked by: L.C.

Scale: AS NOTED

Title: **LOWER LEVEL PLAN - EXISTING**

Project:

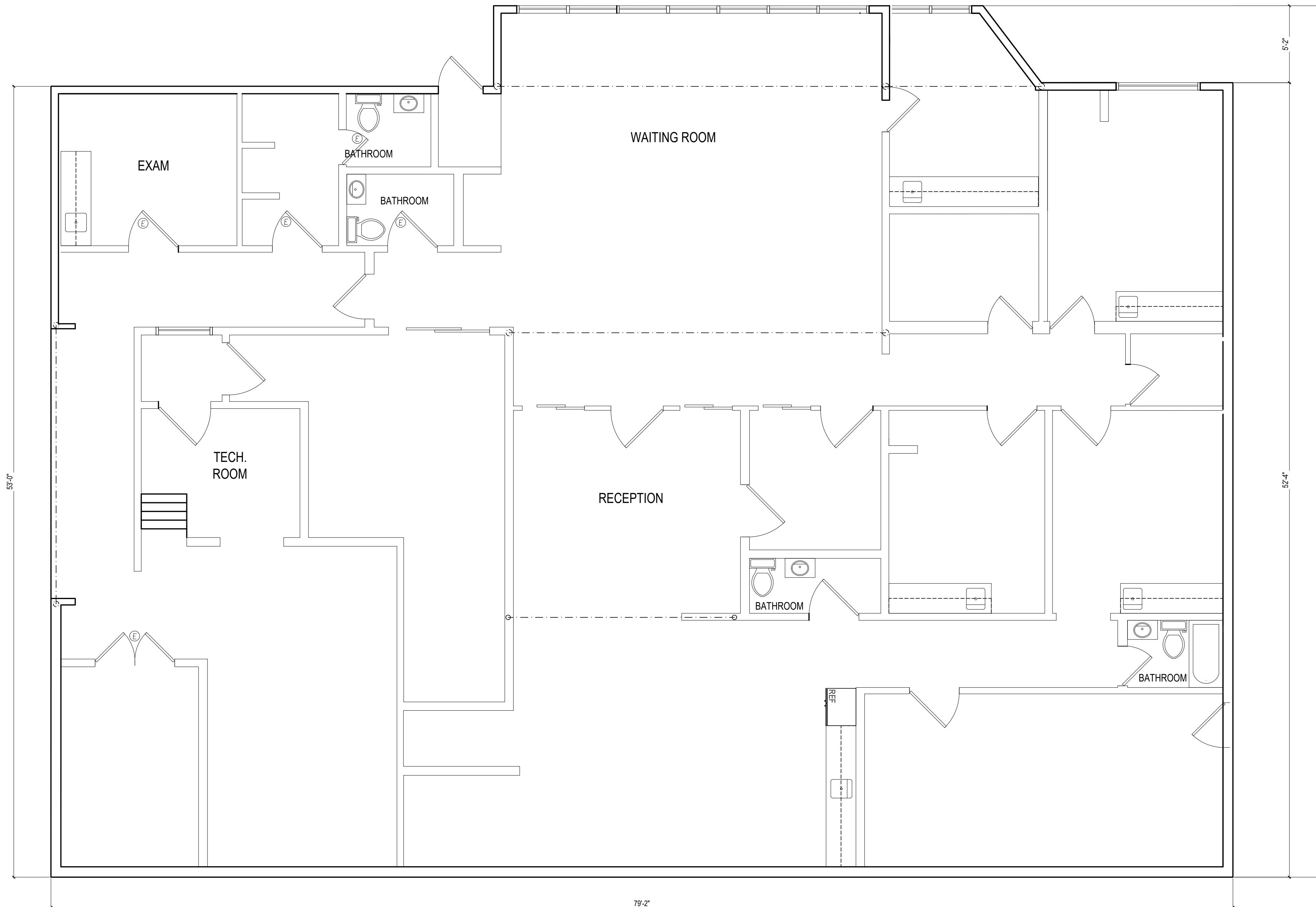
ProHEALTH URGENT CARE FACILITY

120 NORTH COUNTRY ROAD,
 PORT JEFFERSON, NY 11777

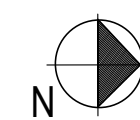
Date:
 00/00/16

Sheet:
A-100.0

SHEET 1 OF 0



LOWER LEVEL PLAN - EXISTING
 SCALE: 1/4" = 1'-0"



Client:

ProHEALTH Care Associates, LLP



Copyright:

All ideas, designs, arrangements and plans indicated or represented by this drawing are owned by and property of Leonard Colchamiro PC AIA and were created, evolved and developed for use on and in connection with the specific project. None of such ideas, designs, arrangements or plans shall be used by or disclosed to any person, firm or corporation for any purpose whatsoever without the written permission of Leonard Colchamiro PC AIA

Approval:

Issue & Revision Dates

08/16/16
08/18/16
08/23/16
08/24/16

PRELIMINARY - NOT FOR CONSTRUCTION

Drawn by: K.D., E.Y.

Checked by: L.C.

Scale: AS NOTED

Title: **UPPER LEVEL PLAN - PROPOSED - ALT 1**

Project:

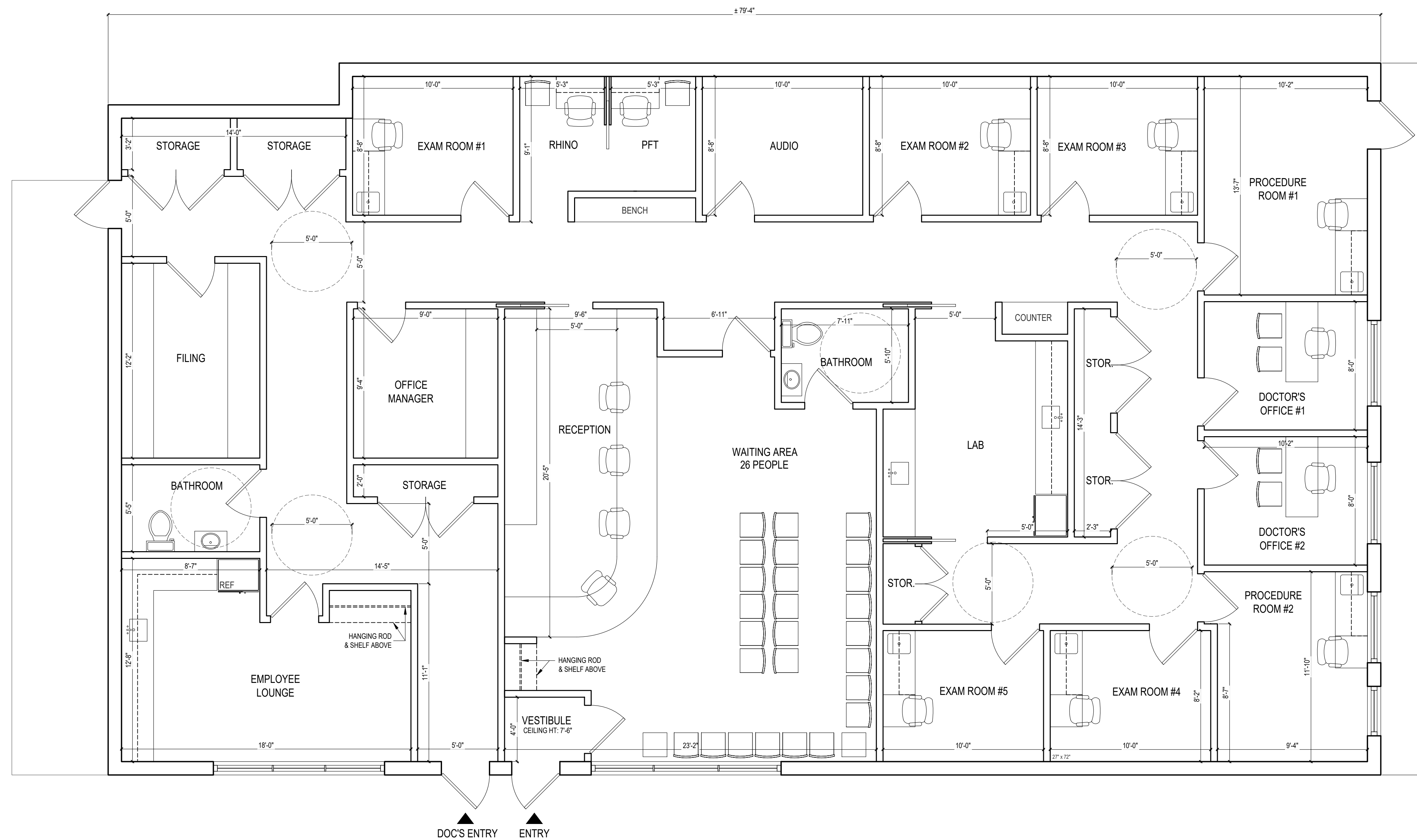
OFFICE OF DR. COHEN

120 NORTH COUNTRY ROAD,
PORT JEFFERSON, NY, 11777

Date:
08/16/16

Sheet:
A-100.0

SHEET 1 OF 0



UPPER LEVEL PLAN - PROPOSED - ALT 2
SCALE: 1/4" = 1'-0"

